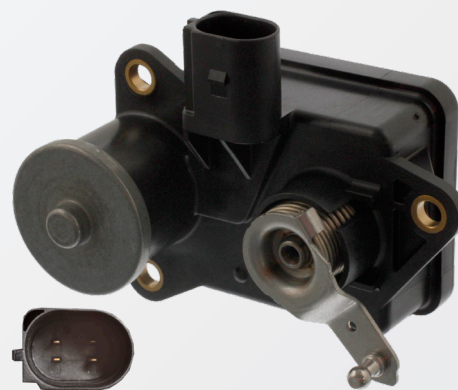
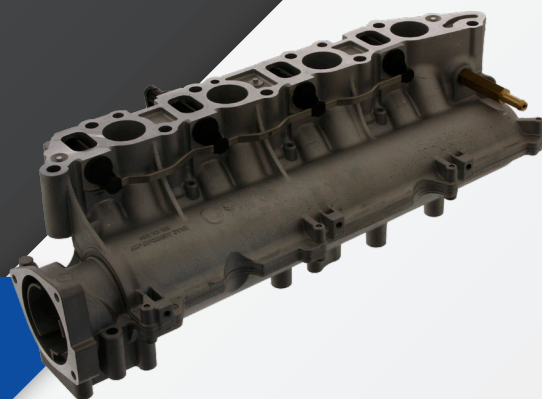


SWAG 70 93 9730, 40 93 9547

to fit:

Vauxhall, Opel, Saab, Fiat, Alfa Romeo
various models. 1.9 Diesel Engines

SWAG®


EN

Intake Manifold and Control Valve

Problem

Poor engine performance, vehicle in limp home mode, swirl actuator malfunction and the engine management lamp illuminated.

Cause

This engine was designed to improve the air/fuel mixture combustion. This was achieved by adapting the air entering the engine, through two separate intake channels in the inlet manifold. Each cylinder has an extra intake channel which in each case is equipped with an adjustable swirl flap, this is actuated through a lever arrangement controlled by the electric drive module. Through the position of the swirl flaps, the swirling of the intake air in the cylinder can be adapted to the specific load conditions of the engine.

In time these inlet manifold swirl flaps often become worn or start to stick. This is due to a build-up of carbon deposits caused by poor combustion, frequent short journeys, and faulty crankcase ventilation.

Solution

Replace the faulty inlet manifold (SWAG 70 93 9730). It is also advisable to replace the control valve, (SWAG 40 93 9547) because this is an intelligent self-learning component. The old unit would have adapted itself to the worn inlet manifold and cannot relearn.

For more technical information please visit: partsfinder.bilsteingroup.com